

**CREST Science Olympiad (CSO)****Sample Paper****Pattern and Marking Scheme**

Grade	Topic/Section	No. of Questions	Marks per Question	Total Marks
Grade 3	Practical Science	25	1	25
	Achiever's Section	10	2	20
Grand Total		35		45

The total duration of the exam is 60 minutes.

Syllabus

Section 1: Plants and Animals, Birds, Food, Housing and Clothing, Transport and Communication, Human Body, Earth and Universe, Matter and Materials, Light, Sound and Force, Our Environment.

Achievers Section: Higher Order Thinking Questions - Syllabus as per Section 1

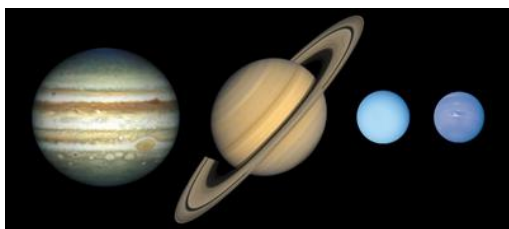
For more details, visit <https://www.crestolympiads.com/science-olympiad-cso>

Practical Science (Each Question is 1 Mark)

1. Choose the correct statement:

- a. Frog is an amphibian as it can live both on land and in water.
- b. A polar bear can live in desert areas.
- c. A camel is an arboreal animal.
- d. Bat is an aerial bird.

2. Look at the picture given below and complete the following sentence:
These are not called the _____.



- a. gas giants
- b. outer planets
- c. morning or evening stars
- d. giant planets

3. Peter is suffering from constipation. Which type of foods should he include in his diet?

- a. Junk foods
- b. Fatty foods
- c. Milk and milk products
- d. Fresh fruits and green leafy vegetables

4. Deepak wrote two statements on the blackboard about different kind of objects:

- 1. Coloured glass is a transparent object.
- 2. Clear glass is a translucent object.

Choose the correct option about the above two statements:

- a. Statement 1 is correct but statement 2 is incorrect
- b. Statement 1 is incorrect but statement 2 is correct
- c. Both the statements are correct
- d. Both the statements are incorrect

5. A scrap dealer wants to separate the iron from other scrap materials. Which of the following force he will use to do so?

- a. Electric force
- b. Muscular force
- c. Magnetic force
- d. Frictional force

6. The picture shown below clearly shows the presence of tiny pores called stomata on the underside of the leaf.

What is the function of stomata?

- a. They keep the plant upright.
- b. They help the plants to breathe.
- c. They carry the food to other parts of the plant.

d. They absorb water and minerals.

7. Observe the picture shown below and identify the process by which water is heated and changes into steam:



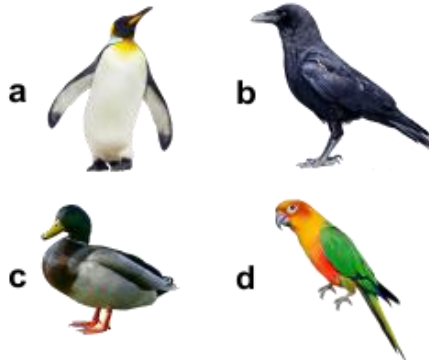
- a. Condensation
- b. Evaporation
- c. Transpiration
- d. Photosynthesis

8. Observe the picture given below. It shows fumes and smoke coming out of a car at a traffic signal. Which of the following pollution is caused by the car?



- a. Air pollution
- b. Soil pollution
- c. Water pollution
- d. Land pollution

9. Given below are pictures of different birds: Which of them is/are the flightless bird(s)?



- a. Only a
- b. Only d
- c. Both b and d
- d. Both b and c

10. What type of clothes protect us from cold?

- a. Clothes made up of water proof material
- b. Long sleeved clothes
- c. Thick and warm clothes
- d. Both b and c

11. Look at the pictures of animals given below and identify the similarity between them:



- a. They all lay eggs and their ears can be seen.
- b. They all have ears that can be seen.
- c. They all have hair on their skin.
- d. They all lay eggs and their ears cannot be seen.

12. Look at the picture given below:

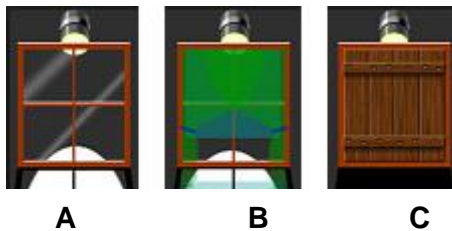
Which of the following systems most likely help the person to break the glass?

- 1. Skeletal system
- 2. Muscular system
- 3. Circulatory system
- 4. Digestive system



- a. 1 and 2
- b. 3 and 4
- c. Only 1
- d. Only 2

13. The picture below shows that some objects allow the light to pass through them while some do not. Identify which among A, B and C is translucent:



- a. A
- b. B
- c. C
- d. None of these

14. Match the column I with the column II and select the correct option:

	Column I		Column II
1.	Vulture	a.	Running bird
2.	Ostrich	b.	Bird of prey
3.	Swan	c.	Scratching bird
4.	Quall	d.	Swimming bird

- a. 1 - b, 2 - a, 3 - d, 4 - c
- b. 1 - b, 2 - a, 3 - c, 4 - d
- c. 1 - b, 2 - d, 3 - a, 4 - c
- d. 1 - d, 2 - a, 3 - b, 4 - c

15. Match the items of Column I with those of Column II and select the correct option:

	Column I		Column II
1.	Terracing	a.	Decayed vegetable or animal matter
2.	Erosion	b.	Cutting down forests
3.	Deforestation	c.	Practised in hilly areas
4.	Humus	d.	To wear away

- a. 1 - d, 2 - c, 3 - b, 4 - a
c. 1 - b, 2 - a, 3 - d, 4 - c

- b. 1 - c, 2 - d, 3 - b, 4 - a
d. 1 - a, 2 - b, 3 - c, 4 - d

16. Complete the pattern shown below correctly:

Aeroplane : Airport :: Ship : _____

- a. Bus stand
b. Parking area
c. Train station
d. Harbour

17. Match column I with column II and select the correct option:

	Column I		Column II
1.	Remove carbon dioxide	a.	Liver
2.	Bean-shaped structure	b.	Small intestine
3.	Absorption of nutrients from food	c.	Kidney
4.	Production of bile	d.	Lungs

- a. 1 - d, 2 - b, 3 - a, 4 - c
c. 1 - c, 2 - d, 3 - a, 4 - b

- b. 1 - a, 2 - b, 3 - c, 4 - d
d. 1 - d, 2 - c, 3 - b, 4 - a

18. Carefully look at the respiratory system present in the human body and answer the question below:

Name the sheet of muscles present just below the lungs:



- a. Diaphragm
b. Bronchioles
c. Wind pipe
d. Alveoli

19. What is the similarity seen between metals and bricks?



- a. Both are transparent objects.
- b. Both are opaque objects.
- c. Both are luminous objects.
- d. Both are translucent objects.

20. Consider the give statements and choose the correct option:

Statement A: A person eating too much protein cannot suffer from obesit

Statement B: Fibre-rich foods maintain our body temperature.

- a. Statement A is correct but statement B is incorrect
- b. Statement A is incorrect but statement B is correct
- c. Both the statements are incorrect
- d. Both the statements are correct

21. Consider the following sequence of planets and answer the question that follows:

Mars, Jupiter, X, Uranus

Identify X:

- a. Mercury
- b. Earth
- c. Saturn
- d. Venus

22. Three students were having a discussion about the kind of clothes one should wear. This is what they said:

Sarah: We should wear cotton clothes in summer.

Angel: We should wear woollen clothes in winter.

Maria: We should always wear nylon clothes in the kitchen.

Choose the correct option related to the above statements made by the students:

- a. Angel and Maria are correct but Sarah is incorrect
- b. All three students are correct
- c. Angel is incorrect but Sarah and Maria are correct
- d. Maria is incorrect but Sarah and Angel are correct

23. Fill in the blanks with suitable terms and select the correct option:

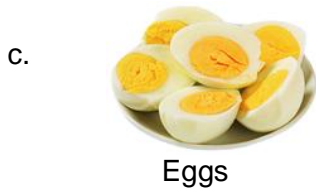
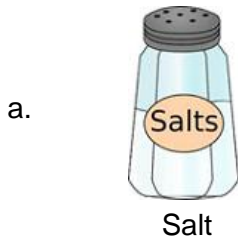
1. When we block the path of light, a _____ is formed.
2. When we look into the water, we see our image due to _____.

- a. 1-eclipse, 2-reflection
- b. 1-eclipse, 2-shadow
- c. 1-shadow, 2-reflection
- d. 1-reflection, 2-shadow

24. Which of the following statements is correct?

- a. A truck is a land transport whereas yacht is a water transport.
- b. A truck is an air transport whereas yacht is a land transport.
- c. The truck has 4 wheels whereas the yacht has 8 wheels.
- d. The truck is water transport whereas yacht is underwater transport.

25. Pam was suffering from anaemia. Eating which of the following foods will help her get better?



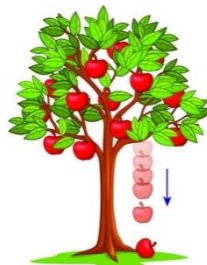
Achiever's Section (Each Question is 2 Marks)

26. Kate and her classmates were going to Mumbai from Delhi to take part in a quiz competition. They reached the Delhi airport by road transport. And after reaching Mumbai they took the bus to the competition venue. After the competition, they came back to Delhi from Mumbai by rail transport. Which of the following means of transport is most likely used by Kate and her classmates to go to Mumbai from Delhi in the least amount of time?

- a. Rail transport
- b. Road transport
- c. Water transport
- d. Air transport

27. In the given picture, we see an apple falling from a tree on the ground due to the force of gravity.

What do you mean by gravity?



- a. The force that pushes every object upwards towards the earth.
- b. The force that pushes every object downwards towards the earth.
- c. The force that pulls every object downwards towards the earth.
- d. The force that pulls every object upwards towards the earth.

28. Identify the plant shown in the picture and complete the following sentence:
Insects get attracted to this plant, lands on its mouth and gets trapped by it because of its _____.



- a. foul smell
- b. thorns that trap the insect
- c. spiky hairs on the outside
- d. bright colour and sweet nectar

29. The roof is a protective covering to the house. It protects us from various weather conditions and dust.

Identify the place where we find more houses with sloping roofs:



- a. In forests
- b. In desert regions
- c. In the plains
- d. On the hills and mountains

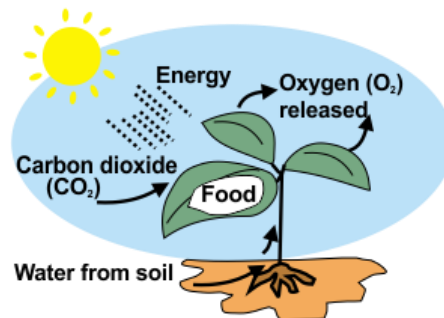
30. Read the passage given below carefully:

X is a very important natural resource and an abiotic component of the environment. It is the uppermost layer of the earth's crust, which supports the growth of plants. It is a non-renewable resource.

Identify X:

- a. Rocks
- b. Water
- c. Soil
- d. None of the above

31. Plants prepare their food through the process of photosynthesis. Plants need carbon dioxide, sunlight and water to prepare their food. In what form do plants store their food?



- a. Cellulose
- b. Starch
- c. Glucose
- d. Salts

32. Identify the bird which has feet as shown in the figure below:



- a. Rooster
- b. Woodpecker
- c. Crow
- d. Hummingbird

33. What is common among the planets given below?

Mercury, Venus, Earth, Mars

1. They are made up of rocks and iron.
2. They all have landforms suggesting past or present volcanic activity.
3. They all have rings and artificial satellites.
4. They all have moons.

- a. 3 and 4
b. 2 and 3
c. 1 and 2
d. 1 and 4

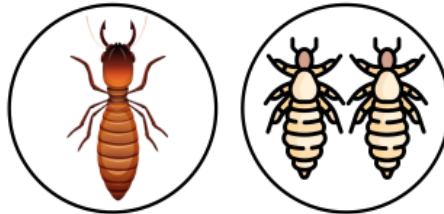
34. Read the following statements and choose the correct option:

Statement 1: Matter changes from one state to another with a change in temperature.

Statement 2: Water can be compressed to occupy less space.

- a. Statement 1 is correct and statement 2 is incorrect
- b. Statement 1 is incorrect and statement 2 is correct
- c. Both the statements are incorrect
- d. Both the statements are correct

35. What is the similarity seen between the two insects namely termites and head lice as shown below?



- a. Both are wingless insects.
b. Both are winged insects.
c. Both are social insects.
d. Both are useful insects.

Answer Key

1.	a	2.	c	3.	d	4.	d	5.	c	6.	b	7.	b
8.	a	9.	a	10.	d	11.	d	12.	a	13.	b	14.	a
15.	b	16.	d	17.	d	18.	a	19.	b	20.	c	21.	c
22.	d	23.	c	24.	a	25.	b	26.	d	27.	c	28.	d
29.	d	30.	c	31.	b	32.	c	33.	c	34.	a	35.	a